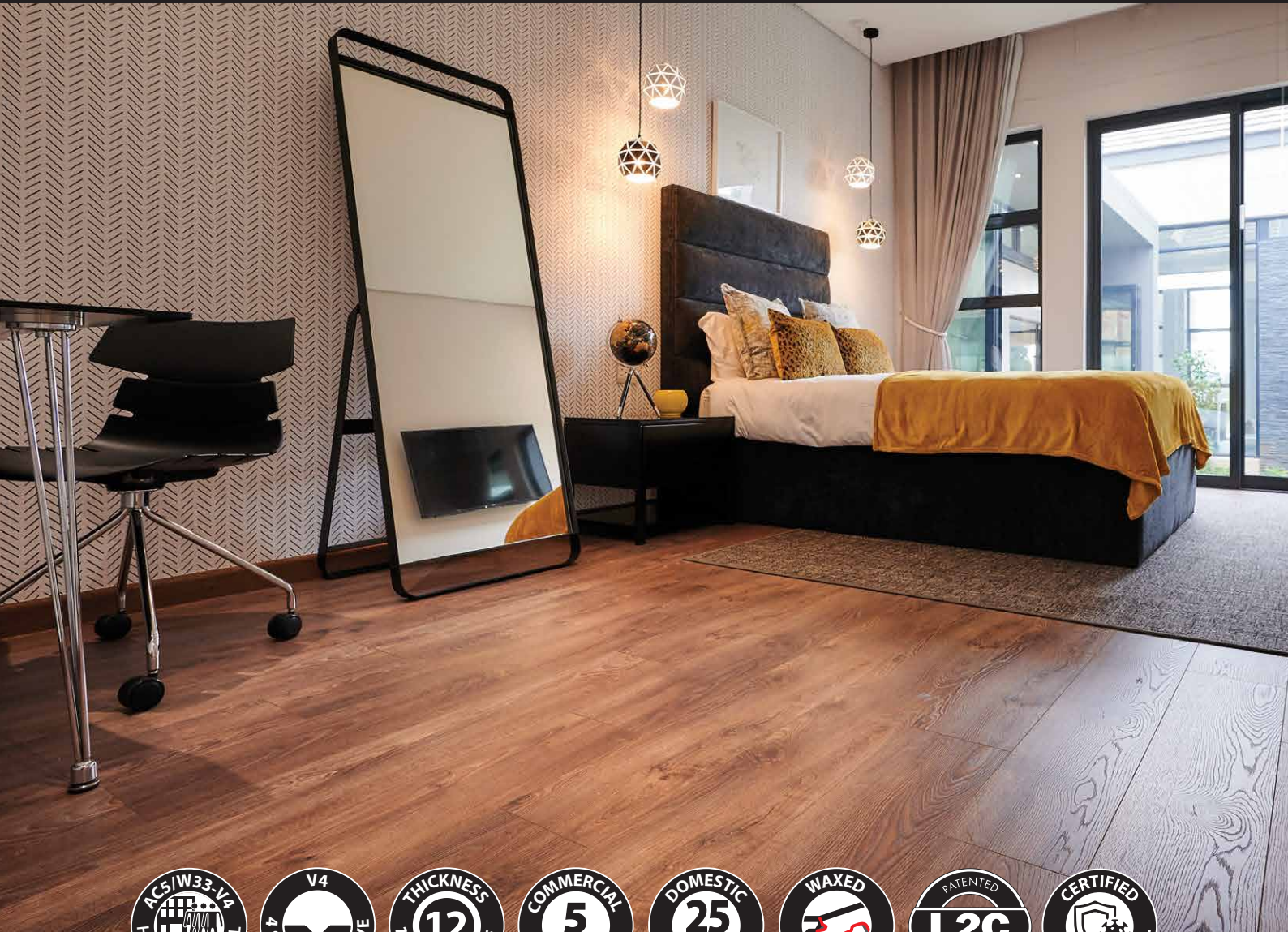


effect



Effect AGT laminate

Available in AC5/W33 - V4

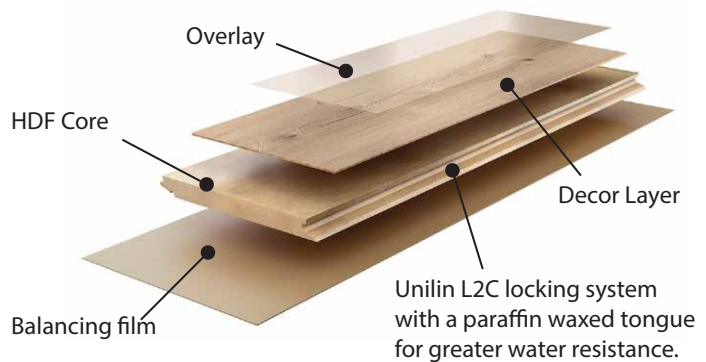
Plank dimensions: 1195 x 189 x 12mm (1.3551 sqm/box)



by

FINfloor™

www.finfloor.co.za

effect



SPECIFICATIONS	AC5/W33 - V4
Top surface	Melamine impregnated decorative film. Protected by anti abrasive overlay.
Core material	H.D.F. (High Density Conifer Fibreboard) with Paraffin waxed tongue for greater water /moisture resistance. Average core density $\geq 900/950\text{kg/m}^3$
Bottom surface	Balancing film
Plank dimensions	1195 x 189 x 12mm
Installation method	Unilin L2C locking system (Glue-less Installation)
Warranty	25 years heavy domestic and 5 years heavy commercial use
Fit for use grading	 AC5/W33 Heavy Domestic  AC5/W33 Heavy Commercial

TECHNICAL DATA	AC5/W33 - V4	
TEST	STANDARD	CHARACTERISTICS/ RESULTS
Abrasion resistance	EN 438	≥ 6500 Revolutions
Surface soundness	EN 13329	$> 1,25 \text{ N/mm}^2$
Scratch resistance	EN 438	$> 3,5$
UV resistance	EN ISO105	Level 6 - Blue wool standard (No discolouration)
Impact resistance	EN 13329	IC3 for class 33
Effect of a soft castor chair	EN 425	No change or damage on appearance should occur
Effect of soft castor furniture leg	EN 424	No visible damage should occur
Resistance to hot pots	EN 13329	Class 4
Resistance to cigarette burn	EN 13329	Class 4
Resistance to water vapour	EN 13329	Class 4
Fire classification	EN13501-1/EN14041:2004	Flame-retardant - B1
Stain resistance	EN 13329	Class 5
Thickness swelling test	EN 13329	$\leq 12\%$ swelling
Density	EN 323	$900-950 \text{ kg/m}^3$
Anti-bacterial	DIN EN ISO 20743	99.9% effective

